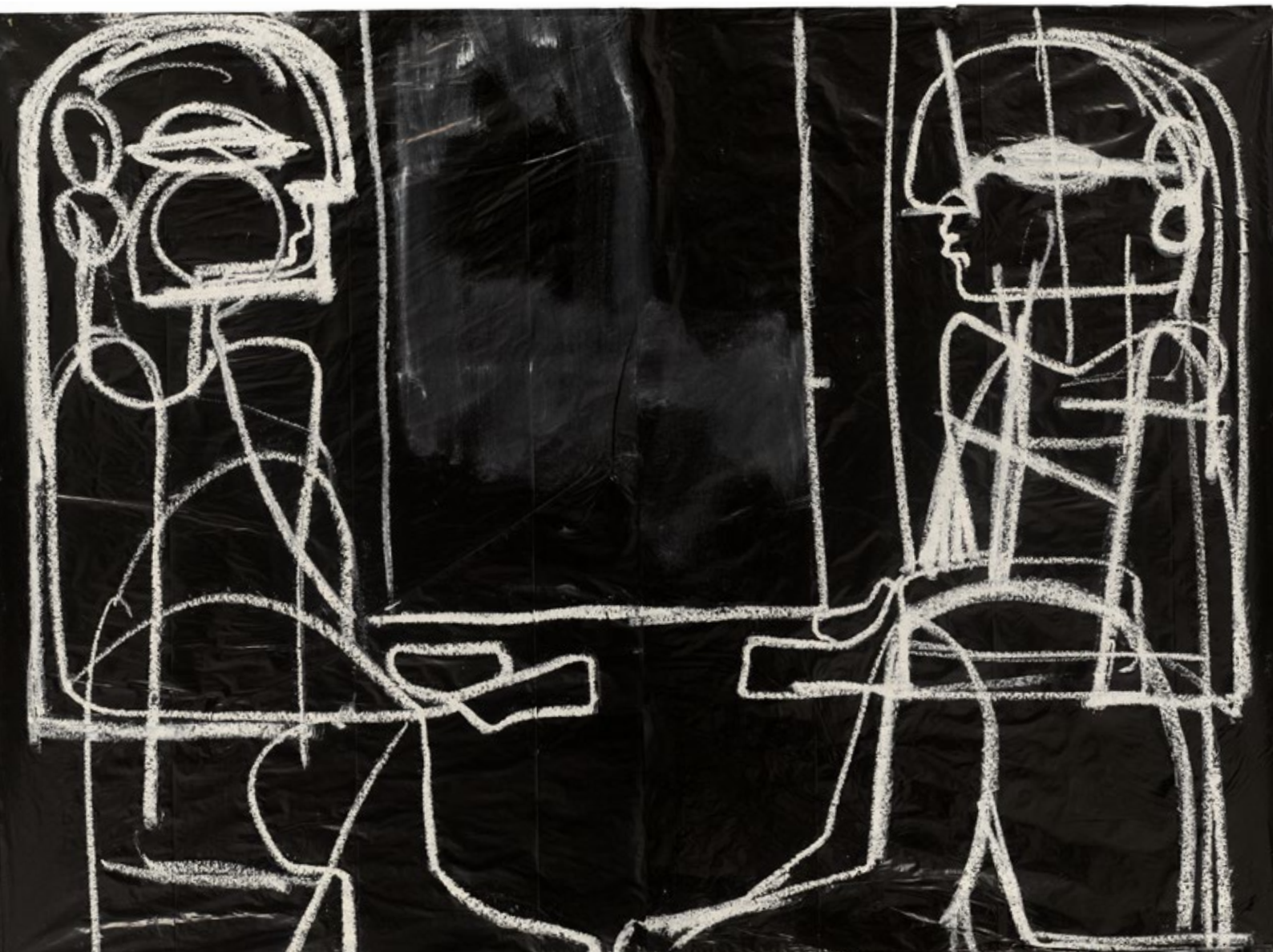


Tincuța Marin

Where the Sun Sleeps

Oratorio dei Crociferi, Venice

15.04. - 12.05.2024



Tincuța Marin

Where the Sun Sleeps

Where the Sun Sleeps is an evocative installation by Romanian artist **Tincuța Marin** unfolding in the historic **Oratorio dei Crociferi** alongside **Palma il Giovane's** most significant Renaissance cycle of paintings. Chronicling the Crociferi Order's evolution from its 12th-century beginnings in support of the Crusades to its liturgical and charitable transformation, these works provide a profound context for Marin's exploration. Executed between 1583 and 1592, Palma's cycle is one of the few singular artistic achievements of sixteenth-century Venetian art, rivalling Tintoretto's work for the Scuola Grande di San Rocco. Within this space, where history meets spiritual contemplation, and art gazes upon art, Marin's installation emerges powerfully, weaving together historical layers and diverse artistic styles.

The centre of the Oratorio is enclosed by four large-scale canvases forming a quadrangle supported by four bronze figures – Marin's installation creates an inaccessible, inviolate space within the sacred space. The sculptures' hieratic stance and elongated limbs hark back to an era of ancient mystique, reminiscent of the protective deities that once guarded old sanctuaries, invoking an uncanny reverence. They recall the function of caryatids standing as silent guardians of time. The paintings are a complex layering of forms and figures depicted in profile, some distinct and others blurred or overlapping, creating a sense of depth and multiplicity.

Like an alchemist, Marin appropriates and amalgamates different visual signals from the Egyptian practice of portraying pharaohs and gods, in which modernist still-life decompositions converge. The artist is fascinated by Nut, the goddess of the sky, stars, cosmos, mothers, astronomy, and the universe. The symbolic arching of Nut over the earth, a powerful gesture embodying renewal and protection, resonates throughout Marin's pieces. Geometric shapes and the interplay of light and dark within the compositions recall both - the narrative depth of Roman frescoes and the cosmic symbolism in Egyptian temples. It suggests the palimpsestic nature of ancient walls, where new stories were inscribed over old. The way colours cascade and blend across the forms brings to mind the frescoes of Pompeii, where images would emerge vibrantly against plaster. The use of blues and reds recalls the lapis lazuli and carnelian frequently found in ancient Egyptian art. Marin wields hues and different pictorial styles with the precision of a composer, using them to invoke moods, suggest fragments of ancient beliefs, or fuse the metaphysical into the tangible. It uncannily resonates with the grandeur of Palma il Giovane's compositions and the spiritual reverence of the space.

Where the Sun Sleeps arises on the threshold of the past and present, set against the Oratorio's historical backdrop. **Tincuța Marin** crafts an anachronistic collage of time, akin to a "*wunderkammer*" filled with eclectic temporal artefacts repurposed for new narratives. Egyptian deities, medieval and modernist references are not employed for their symbolic weight but as elements in a grander pictorial lexicon that dances on the verge of phantasmagoria.



Tincuța Marin

Born in 1995 in Galați / Romania. Lives and works in Cluj-Napoca / Romania

EDUCATION

- 2017 – 2019 University of Art and Design, Master's Degree – Painting, Cluj-Napoca, RO
- 2014 - 2017 University of Art and Design, Faculty of Fine Arts –Painting, Cluj-Napoca, RO
- 2010 - 2014 Art Highschool "Dimitrie Cuclin", painting, Galați, RO

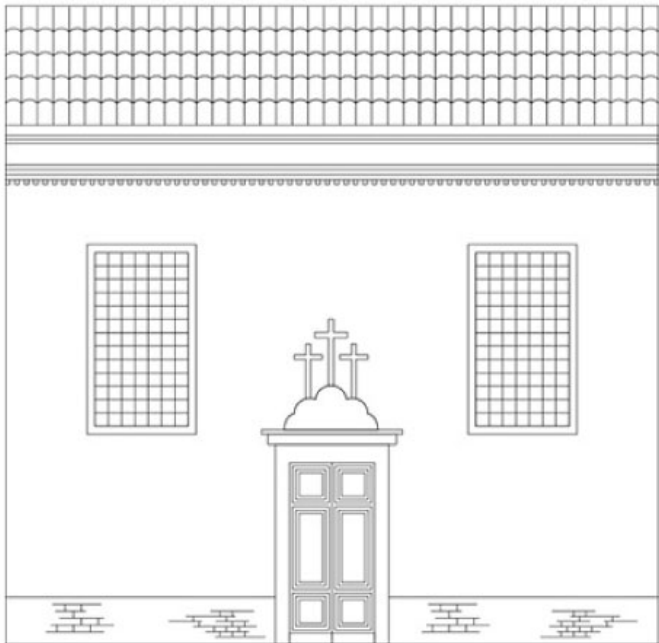
SOLO EXHIBITIONS

- 2024 "Purring Figure" Ellen de Bruijne Projects, Amsterdam, NL
- 2023 "Line, Point, Form and Colour" CFHILL Stockholm, SE
 - "Distant Realities" curated by Mark Gisbourne, Jecza Gallery, Timisoara, RO
- 2022 "Chapter IV", curated by Zsilka Monika, Double Q Gallery, Hong Kong, HK
 - "Chapter III - When we enter the lair of Bigfoot, Gagafu and Dracovenie. Let's hope we get out alive...", curated by Jane Neal, Jecza gallery at RKI Berlin, DE
- 2021 "EREWON/NOHWERE", curated by Dr. Dan Breaz, National Museum of Art Cluj-Napoca, RO
 - "Dianthus Caryophyllus", curated by Domenico de Chirico, Jecza Gallery, Timisoara, RO
- 2019 "Dinozaurii traiesc in cele sapte ceruri suprapuse", White Cuib Gallery, Cluj-Napoca, RO
- 2018 "In the dinosaur World stars are green"- Atelier 4, Cluj-Napoca, RO
 - "Teatrul mintii" French Institute "Cave Gallery, Cluj-Napoca, RO
- 2017 "Distorted Realities" Casa Matei Gallery, Cluj-Napoca, RO

GROUP EXHIBITIONS

- 2024 "State of Flux" BIJU Gallery, Cluj-Napoca, RO
 - "autoportret" Galeria Plan B, Berlin, DE
- 2023 "Kindred Visions" curated by Maria Rus Bojan, Secci Gallery, Florence, IT
 - "The Picasso Effect" Museum of Recent Art & Picasso Museum, Bucharest, RO
 - "Ghosts Whisper Load and Clear", curated by Adrian Ganea, Zina, Cluj-Napoca, RO
- 2022 "Les Femmes du Feu" curated by Thale Blix Fastvold, Sector 1 Gallery Bucharest, RO
 - "Dreams & Games", Tajan Gallery, Paris, FR
 - "Stolen Moments, Vivid Dreams", David Kovats Gallery, curated by Jane Neal, London, UK
- 2021 "1+2+3+4" curated by Ami Barak, Jecza Gallery, Timisoara, RO
 - "XYZ", QContemporary, Budapest, HU
 - "Romanian Contemporary Art", CFHILL, curated by Carmen Casiu, Stockholm, SE
 - "Network Access", Funnel Contemporary, Belgrade, RS
- 2020 "The Disjunction of Change", Combinatul Fondului Plastic, ArtSAFE, Bucharest, RO
 - "Echoes beneath the waves", Art Museum, Cluj-Napoca, RO
- 2019 "Building a new world", FISAD, Albertina Academy of Fine Arts, Turin, IT
 - "The Night Watch" – Art Museum, Cluj – Napoca, RO
 - "Soon this body will be still" - Matca Art Space, Cluj-Napoca, RO
- 2018 "A word for each of us", Richter FineArt Gallery, Rome IT
 - "Sottobosco" curated by Antonello Tolve - Art Museum, Cluj-Napoca, RO
 - "Talking 'bout my generation", Plan B Gallery, Cluj-Napoca, RO
- 2017 "Breaking Rules", Art Museum, Cluj-Napoca, RO
 - "Statart Point Prize ", Victoria Art Center Gallery, Bucharest, RO

Oratorio dei Crociferi Venice, Italy



Campo dei Gesuiti, 4904, 30121 Venezia, Italia



The Oratorio dei Crociferi in Venice is celebrated for its exceptional series of paintings by **Palma il Giovane**, marking a distinctive and innovative moment in the Venetian Renaissance.

Created between 1583 and 1592, this pictorial cycle is notable for being one of the few in sixteenth-century Venetian art completed by a single artist, offering a rare cohesive and unified artistic vision paralleled only by Tintoretto's work in the School of San Rocco.

The work is noted for its deep narrative quality, dividing the eight canvases into three thematic categories: the history of the Cruciferous and their hospital, the function of the Oratory as a chapel of a hospice, and the liturgical character typical of chapels of the time.

This categorization not only demonstrates Palma's versatility as an artist but also his ability to engage with and portray complex religious and historical narratives through his work. Its vivid storytelling and the innovative use of architectural motifs to create a sense of continuity and connection between the individual pieces. For instance, the first two paintings are linked through painted architectural arches to symbolize the union between Rome and Venice, a creative approach that adds a layer of symbolic meaning to the works.

Furthermore, Palma's paintings are innovative unique portrayal of characters, employing bright colors and a style that merges Mannerism with a portrait-like realism, contributes a distinctive and unrevealed dimension to the Venetian Renaissance art scene.

Tincuța Marin

Where the Sun Sleeps

Schedule for the opening week:

15 April – 16:00 – 20:00 opening reception

16 April – 10:00 – open to the public, 16:00 – 20:00 opening reception

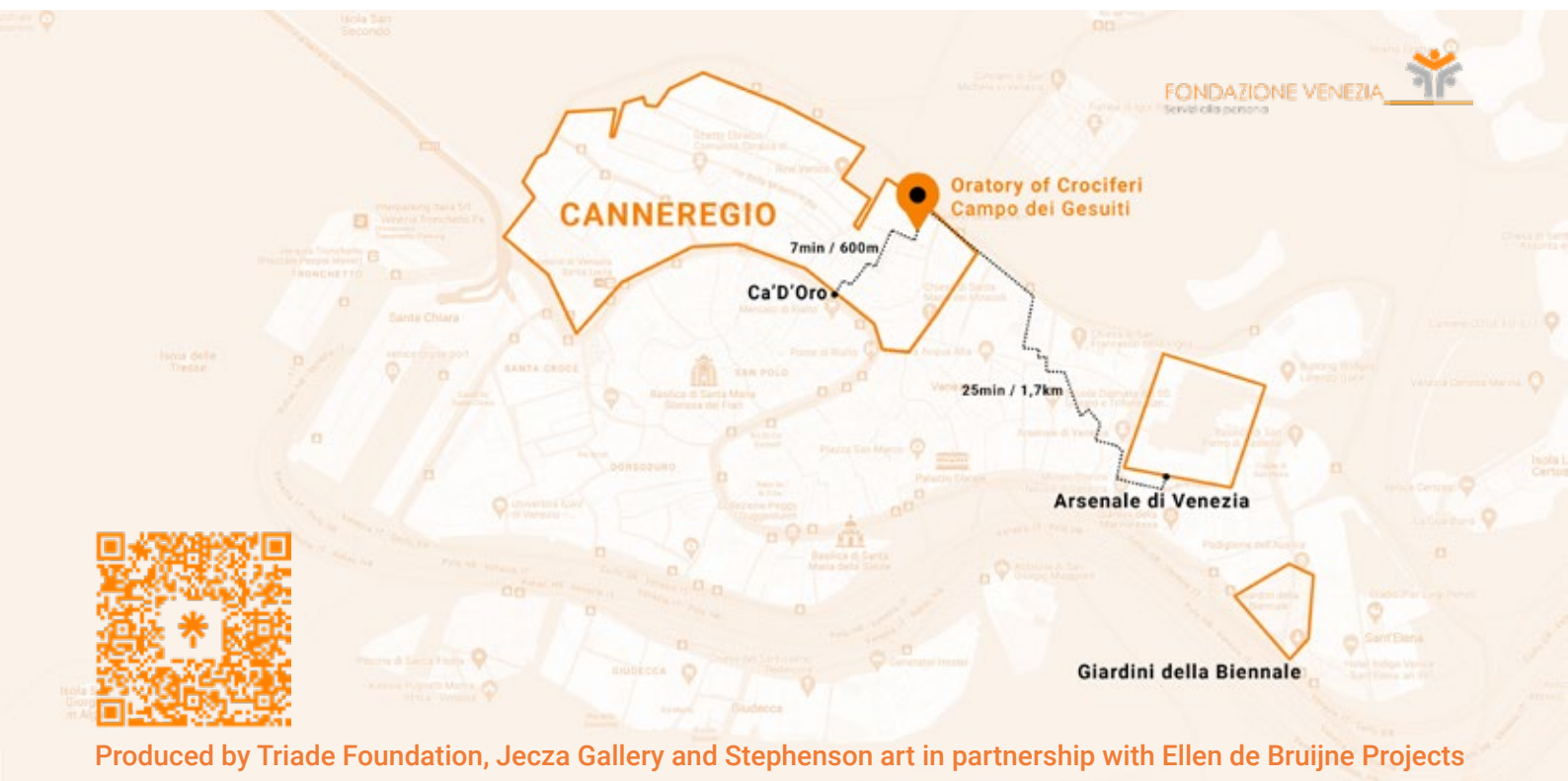
17 April to 21 April – open to public 10:00 – 20:00

Schedule after the opening week:

22 April to 12 May – open to public 10:00 – 18:00

The Oratorio dei Crociferi is located 2 min walk to **Fondamenta Nove**, 7 minutes walk to **Ca' D'Oro** and 25 min walk from **Arsenale di Venezia**.

Placed on the left side of **Campo dei Gesuiti**, the Oratorio is an integral part of a medieval building having a simple hut structure – the **Ospizio Renier Zen** – founded in the XII century by the religious order of the Crociferi and assigned to a hospital and resting place for pilgrims and crusaders. The chapel is located across from the church of the Gesuiti in Canneregio, Venice.



Produced by Triade Foundation, Jecza Gallery and Stephenson art in partnership with Ellen de Bruijne Projects